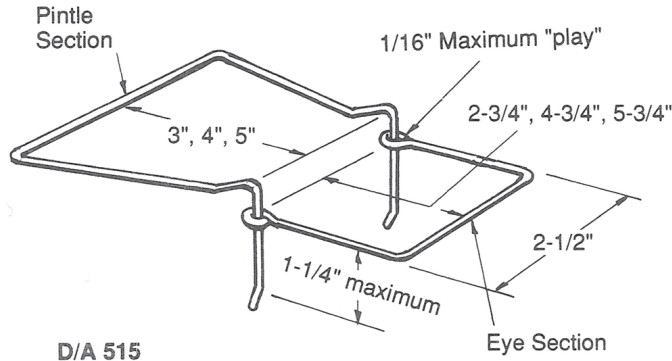


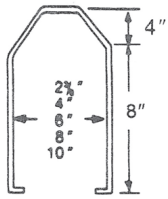
TIES / ANCHORS

Adjustable Wall Ties DA515

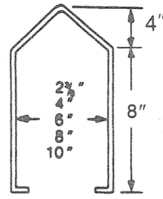


D/A 515

Trapezoid Ties

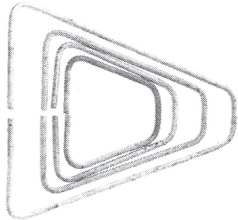


D/A 750



D/A 730

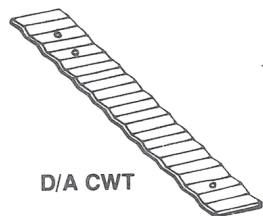
Triangle Ties



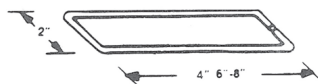
D/A 700-708

Size: 3" wide x 3" long
4" wide x 4" long
5" wide x 5" long
7" wide x 7" long
7" wide x 9" long

Corrugated Wall Ties



D/A CWT

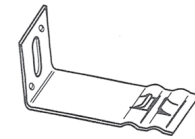


D/A 510

Buck and Frame Anchors

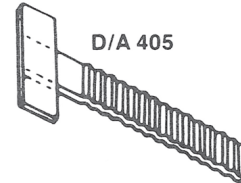


D/A 401



D/A 431

(PATENT PENDING)



D/A 405

MATERIAL SPECIFICATIONS

Carbon Steel	ASTM A82
Stainless Steel Wire	ASTM A580, Type 304
Carbon Steel Sheet	ASTM A366
Stainless Steel Sheet	ASTM A167, Type 304

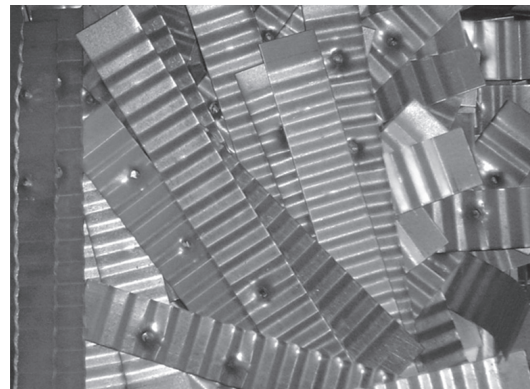
MATERIAL SIZES

Wire	3/16" Φ w 2.8
CWT	16, 22, 26*, 28* ga
Buck & Frame	12, 14, 16 ga.
*NOT RECOMMENDED BY ACI530	

FINISH (GALVANIZED)

Mill Galvanized Wire	ASTM A641 0.10 oz./sq. ft.
Mill Galvanized Sheet	ASTM A525 G60
Hot Dipped	ASTM A153 1.50 oz./sq. ft.

*DA515 Adjustable Ties are made up using a DA518 Eye and a DA213 Pintle



MASONRY