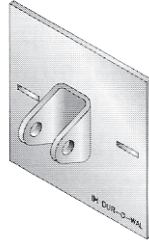


BRACE-RITE ATTACHMENT DEVICES

D/A 800MP - Mounting Plate connects to wall face and bears on the brace side of the wall. It is manufactured from 3/8" thick steel plate conforming to ASTM A36. The pipe brace is attached with a 5/8" diameter button head pin.



D/A800BP and D/A800SBP -

Backing plate is installed on the unbraced side of the wall. The Backing Plate is manufactured from 3/8" steel plate conforming to ASTM A36. The **D/A800BP** is used when the brace is attached to the wall. Two slots are provided to accommodate the Wall Ties which are inserted through the bed joints of the wall. The **D/A800SBP** Strongback Backing Plate is installed on the unbraced side of the wall when a strongback is used. One slot is provided to accommodate the Wall Tie which is inserted through the head joint of the wall.



D/A-800BP - BACKING PLATE

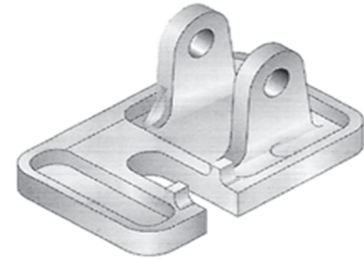


D/A-800SBP - BACKING PLATE

D/A 800BC - Brace Clip connects the brace to an aluminum horizontal strut or strongback. It is manufactured with 3/8" steel plate conforming to ASTM A36. The safe working load is 3000 lbs. Attach brace clip to strongback of strut with 1/2" diameter, Grade 5 bolts.



D/A 800FB - Floor Bracket casting connects the brace to a concrete slab, foundation, or deadman. Use with D/A-800CA Coil Anchor. Safe Working Load is 6500 lbs.



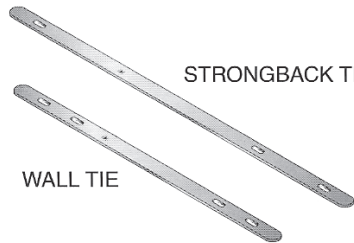
D/A 800CA - Coil Anchor is used to attach the floor bracket to substrate or deadman. Use with D/A 800FB.



D/A800WT - Wall ties connect the mounting plate to the backing plate through the wall. They are manufactured from high strength steel. The safe working load is set at 3000 pounds using a safety factor of 2 to 1. The wall ties are available in two sizes.

D/A800WT610 accommodates 6" and 10" block.

D/A800WT812 is used with 8" and 12" block.



STRONGBACK TIE

WALL TIE

D/A 800FC - Foundation Clip is used to connect the horizontal strut to a deadman, sled, or other above grade anchorage. It is manufactured from 3/8" steel plate conforming to ASTM A36. Fasten to concrete with two 1/2" anchor bolts.



D/A800ST - Strongback

Ties are used to tie strongbacks to the wall.

D/A800ST610 accommodates 6" and 10" block plus the strongback. **D/A800ST812** is used with 8" and 12" block and the strongback.

D/A-800W - Wedges are manufactured from 3/16" high carbon steel for maximum gripping strength.

