

## FOAM EXPANSION JOINTS FOR MASONRY

### Primary Use

To accommodate movement due to moisture, temperature changes and structural movement in exterior, vertical and horizontal applications.

### POLYETHYLENE (non cross-linked, closed cell expanded)

- Lightweight
- White in color
- Low moisture absorption
- Bond breaker

### Density

- ASTM D-3575 (Nominal 1.7 PCF)

### Compression Set

- ASTM D-3575  
(22 hr. compression @ 73°F ± 3°F)  
(24 hr. recovery @ 73°F ± 3°F—24.45 psi)

### Water Absorption

- ASTM D-3575  
(After submerged 48 hrs. @ 65°F-90°F—3% max)

**PACKAGING**  
Thickness: 1/8" - 2"  
Standard Sheet: 3' x 9'  
Rolls: 3/8" x 3" x 50' (1000' Master)  
Special sizes available on request

### NEOPRENE (closed cell sponge)

- Available with adhesive backing
- Black in color
- Low moisture absorption

### Polymer

- Neoprene/SBR

### SAE Specification

- J18-R—SCE 41
- ASTM D-1056-67—SCE 41
- ASTM D-1056-68—RE 41

### Compression Deflection

- 25% PSI Compression (varies with thickness) = 2-5 psi

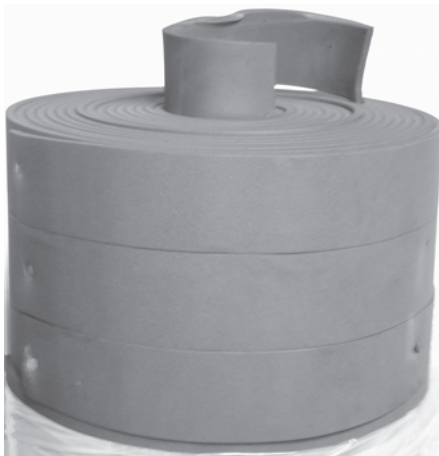
### Shore OO Durometer (Average)

- 45

### Water Absorption by Weight (Max)

- ASTM D-1056—5% (10% allowed)

**PACKAGING**  
Thickness: 1/8" - 2"  
Rolls: 1/8" x 3" x 50'  
3/8" x 3" x 50'  
Special sizes available on request



**MASONRY**