

## MORTAR NET™ Drainage System

**Mortar Net™ with Mortar Net™ Weep Vents form a complete cavity wall drainage system.**

MORTAR NET and MORTAR NET BLOCK are the leading mortar dropping collection products providing the solution for clogged weep holes in brick cavity and single wythe block construction. Featuring a patented-shaped design and 90% open-mesh weave, MORTAR NET and MORTAR NET BLOCK catch and suspend mortar droppings and other debris above the weep holes. MORTAR NET and MORTAR NET BLOCK prevent the mortar from forming a barrier against necessary water flow, allowing for the free migration of moisture from the wall to the weep holes.

The efficient management of moisture that MORTAR NET and MORTAR NET BLOCK provide eliminates efflorescence on interior and exterior masonry walls and prevents damage caused by freeze/thaw cycles ensuring optimum performance of the walls.

MORTAR NET WEEP VENTS are used in conjunction with MORTAR NET and MORTAR NET BLOCK to prevent insects and debris from clogging weep holes as well as ensuring that masonry walls maintain their finished appearance.

**MORTAR NET™ WEEP VENTS**  
MORTAR NET WEEP VENTS are the easy way to ensure brick cavity and single wythe block construction masonry walls maintain their finished appearance and drain correctly for life.

For years, weep holes have been blocked by insects or debris, resulting in efflorescence and other damage caused by water or improper air movement. To ensure walls always breathe, drain, and dry quickly, and to keep out insects, specify MORTAR NET WEEP VENTS for all your buildings.

**HOW MORTAR NET™ WORKS**  
MORTAR NET for brick is used in traditional masonry, steel and wood stud cavity wall construction. MORTAR NET is placed on top of the flashing inside the wall cavity where it catches and permanently suspends mortar droppings above the level of the weep holes and flashing.

MORTAR NET is easy to use. It requires no fasteners or adhesives, no special skills or tools. After the first one or two courses of bricks are laid, place a continuous row of MORTAR NET in the cavity or collar joint on the flashing against the inside of the outer wythe at the base of the wall.

To prevent mortar bridging between the outer wythe and inner wall, install flashing and any material used as filler to match cavity width to product size extending from the bottom of MORTAR NET to at least 6" above the top of MORTAR NET.

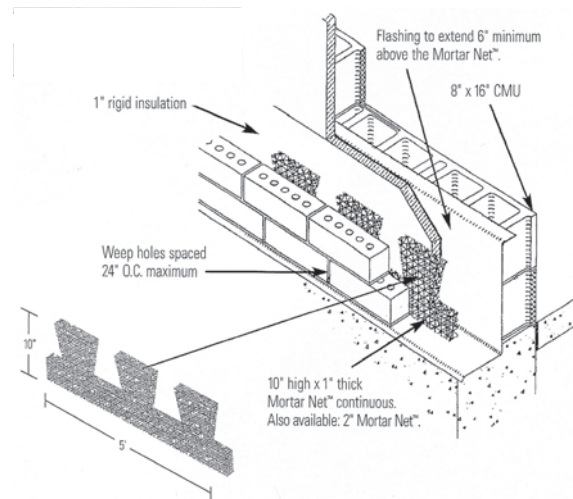
Cavity should be no more than 1/4" wider than 1" and 2" thick material and 0.4" thick material should touch both the outer and inner wall, insulation, or filler used to adjust the cavity size.

Just 2.25" x 3.5" x .5", our Weep Vents could not be easier or quicker to install. Made from recycled polyester with a 90% open mesh and bonded with a flame-retardant adhesive to provide resilience and strength, they're available in a choice of attractive colors to match the mortar being used - white, brown, tan, gray, almond, or red. Their installation adds to the beauty of the wall by duplicating the texture and color of mortar, thus eliminating open holes and dark shadows. Special sizes are available upon request.

MORTAR NET .4" and 1" material is made of high-density polyethylene. MORTAR NET 2" is made of recycled polyester. This material will not oxidize, rot, promote mold or fungus, or react with other common building materials such as mortar, cement, asphalt, modified bitumen, PVC, copper, or galvanized metal, thereby ensuring long-term performance for all materials.

### MORTAR NET™ SIZES

WIDTH	HEIGHT	LENGTH	PACKAGE QTY.
.4"	10"	5'	250
1"	10"	5'	100
2"	10"	5'	100



**U.S. Patent Reissue No. 36,676**

