

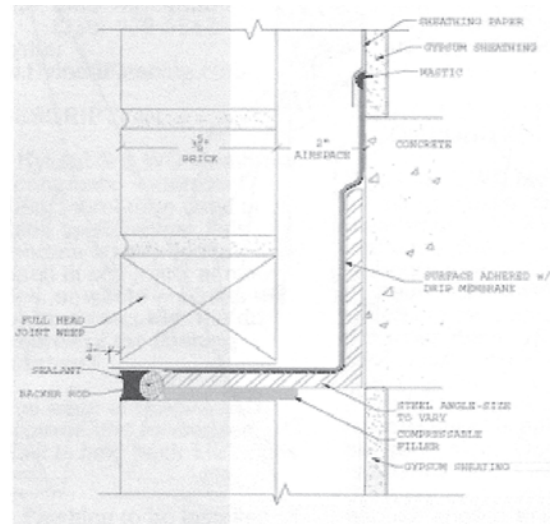
## HYLOAD S/A SURFACE ADHERED MEMBRANE WITH DRIP EDGE

The Hyload S/A Membrane with Drip Edge is a non UV sensitive, 40 mil composite waterproof flashing membrane. The top 25 mil is composed of reinforced DuPont Elavloy KEE polymer. The bottom surface is a 15 mil asphaltic adhesive with release paper. It is used in all flashing applications. This membrane is designed to be used with soft joints at relief angles, or where sealants will come in contact with the drip edge area of the flashing membrane.

At one edge of the S/A Membrane, the rubberized asphalt is held back 1 1/2". This allows:

- Proper soft joint installation at relief angles without additional costly and dangerous metal drip edge pieces.
- Flashing to be installed through the wall 1/4" to form a drip. Never hold flashing back 1/2" again.
- Prevents the possible extrusion of rubberized asphalt through the wall due to high compression loads.

Hyload S/A Membrane with Drip Edge is used in conjunction with Hyload Flashing Primer (for increased adhesion) and Hyload Mastic or Flashing Adhesive for termination and mounting membrane.



MASONRY

**PACKAGING**  
12", 18", 24", 36" x 75'  
Available in black, gray tan or white

## SURFACE ADHERED MEMBRANE

The Hyload S/A Membrane is a 40 mil polymeric, reinforced membrane incorporating a 25 mil layer of DuPont's Elvaloy KEE polymer and coated with a layer of 15 mil SBS asphalt adhesive on one side. Hyload S/A Flashing Membrane combines the convenience of a self-adhered membrane with the strength, integrity, and UV resistance of the Hyload Cloaked Flashing System. Hyload S/A Membrane is used as the lineal flashing, in conjunction with standard Hyload Cloaks and metal drip edge. Hyload S/A Membrane is used in surfaced adhered flashing applications directly over masonry, concrete, gypsum, wood or metal substrates which have been properly primed. Hyload Cloaked Flashing System can be used in all wall construction flashing applications.

Hyload S/A Membrane is used in conjunction with Hyload Flashing Primer (for increased adhesion) and Hyload Mastic to seal top edges of membranes, membrane to membrane.

**PACKAGING**  
12", 18", 24", 36" x 75'  
Available in black, gray, tan or white