

# VOLCLAY PANELS

## Bentonite Waterproofing System

### DESCRIPTION

Volclay Panels are a highly effective waterproofing system composed of a biodegradable kraft board filled with high-swelling, sodium bentonite. Volclay Panels contain a controlled rate of 1 pound per square foot of Volclay sodium bentonite inside the flues of the 4' x 4' x 3/16" thick corrugated kraft board. A special version, Volclay Type 1C Panel, features a clear, water resistant coating on the print side of the Panel to inhibit premature hydration of the bentonite from inclement weather prior to backfilling or concrete placement. Once backfilled, Volclay Panels hydrate and form a monolithic waterproofing membrane. Volclay Panels contain zero VOC, can be installed in almost any weather condition to green concrete.

Volclay Panels work by forming a low permeability membrane upon contact with water. When wetted, unconfined bentonite can swell up to 15 times its dry volume. When confined under pressure the swell is controlled, forming a dense, impervious waterproofing membrane. The swelling action of Volclay can self-heal small concrete cracks caused by ground settlement, concrete shrinkage, or seismic action; problems over which there is normally no control.

### APPLICATIONS

Volclay Panels are designed for below-grade vertical and horizontal structural foundation surfaces. Typical applications include backfilled concrete walls, earth-covered roofs, structural slabs, and tunnels. Applications may include structures under continuous or intermittent hydrostatic pressure.

### INSTALLATION

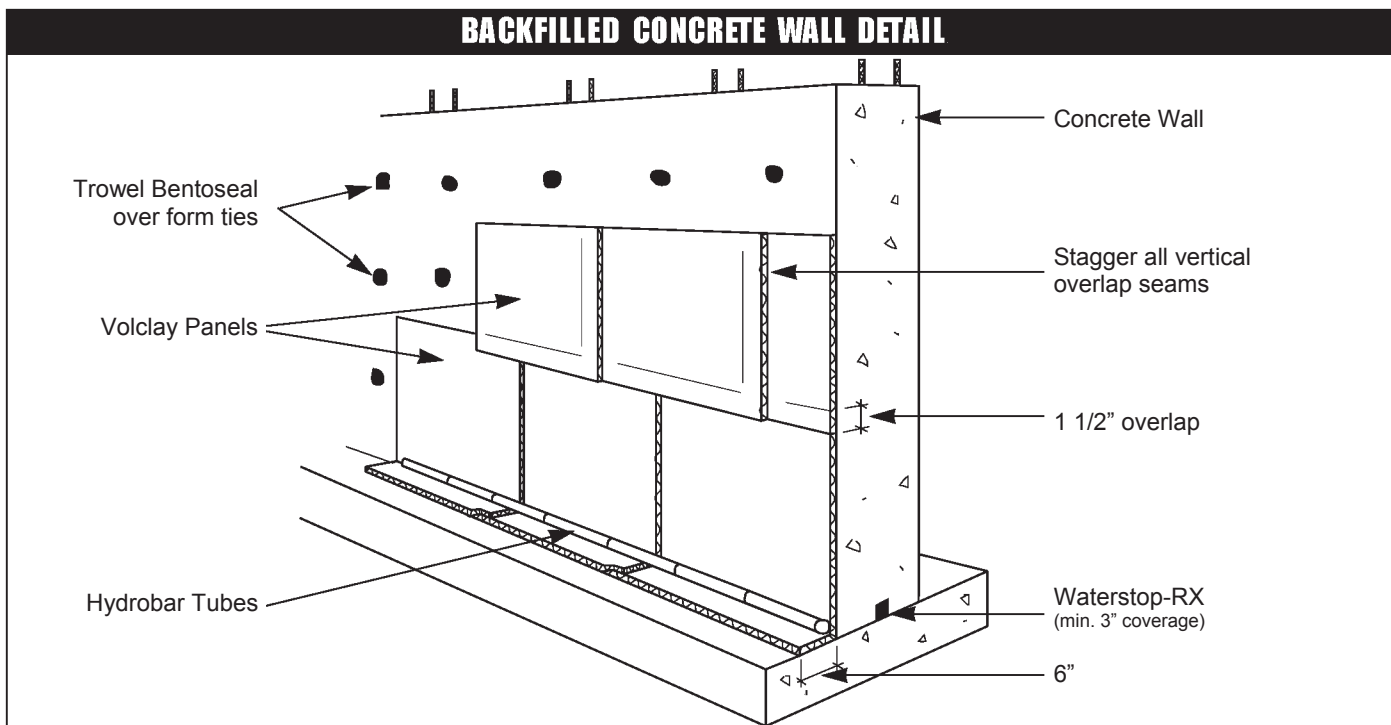
Install both Type 1 and Type 1C Panels with the print side facing the installer. Install Waterstop-RX in all applicable horizontal and vertical concrete construction joints.

### LIMITATIONS

Do not install Volclay Panels in standing water or during precipitation. Volclay Panels are not designed for unconfined above-grade waterproofing applications or below-grade masonry block foundation walls. Volclay Panels are engineered for use under reinforced structural concrete slabs of 6" thick or greater. Do not install Volclay Panels in horizontal split-slab plaza deck applications that will receive a poured concrete wear surface or other solid topping.

### SIZE AND PACKAGING

Volclay Type 1 and Type 1C Panels are 48" x 48" x 3/16" thick. Each Panel weighs approximately 18 lbs. Volclay Panels are packaged 125 panels per pallet; 2000 sq. ft. per pallet



**WATERPROOFING**