

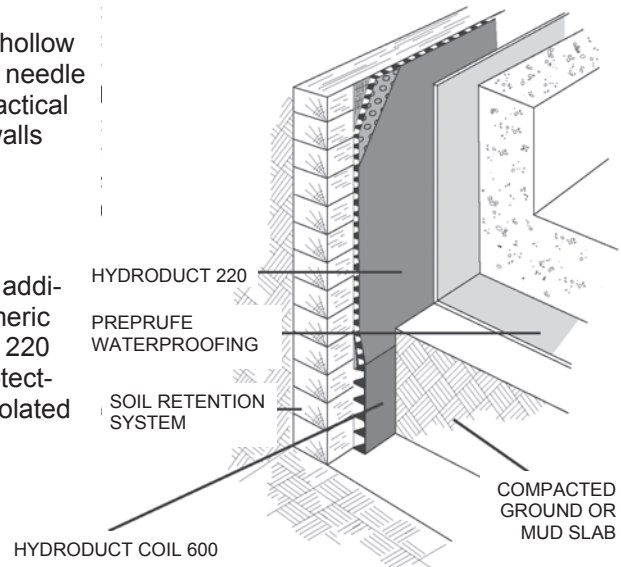
HYDRODUCT® 200 & 220

Hydroduct 200

Hydroduct 200 is a geocomposite drainage sheet comprised of a hollow studded polystyrene core covered on one side with a non-woven, needle punched polypropylene filter fabric. It is designed to provide a practical collector and deflector of unwanted ground water on foundation walls that do not have membrane waterproofing.

Hydroduct 220

Hydroduct 220 is essentially the same as Hydroduct 200 with the addition of a smooth, polymeric sheet adhered to the core. The polymeric sheet acts as protection for membrane waterproofing. Hydroduct 220 can be used with Bituthene, Procor, or PrePruf. In addition to protecting the membrane from damage, it minimizes the build up of percolated surface water against the structure.



PACKAGING & COVERAGE
Hydroduct 200 & 200 available in 4' x 50' rolls

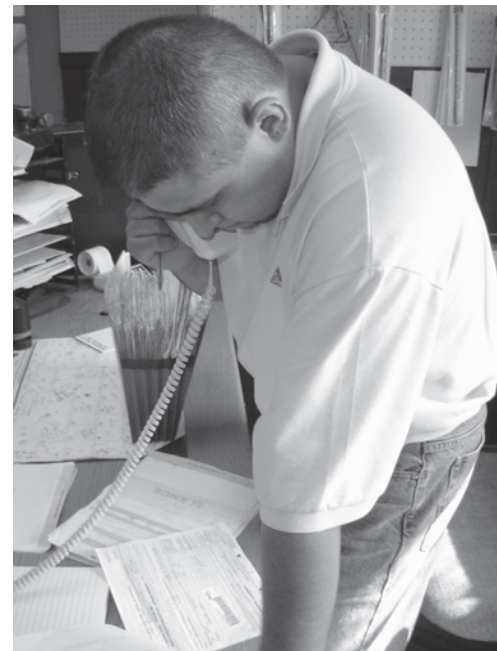
GRACE ICE & WATER SHIELD® Self-Adhered Roofing Underlayment for Premium Roof Leak Protection

PRODUCT DESCRIPTION

Grace Ice & Water Shield is a premier membrane composed of two waterproofing materials -- an aggressive rubberized asphalt adhesive backed by a layer of high density cross laminated polyethylene. The rubberized asphalt surface is backed with a foldless release paper that protects its adhesive quality. During application, the release paper is easily removed, allowing the rubberized asphalt to bond tightly to the roof deck.

An ice dam can form on almost any roof after a substantial snowfall. The interior heat of the structure causes snow to melt and later freeze to form an ice dam along the eaves. As more snow melts, water flows down the pitch of the roof, backs up behind the ice dam, forces its way under the shingles, through the roof deck, and into the structure.

PACKAGING
3' x 75' Rolls



WATERPROOFING